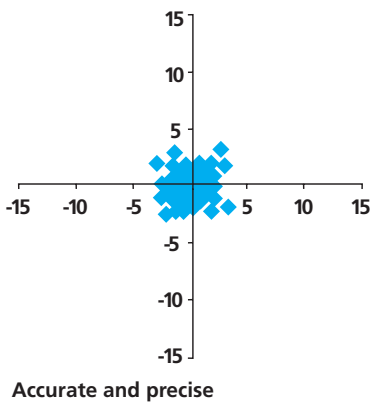
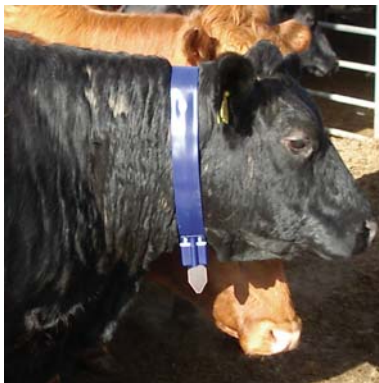
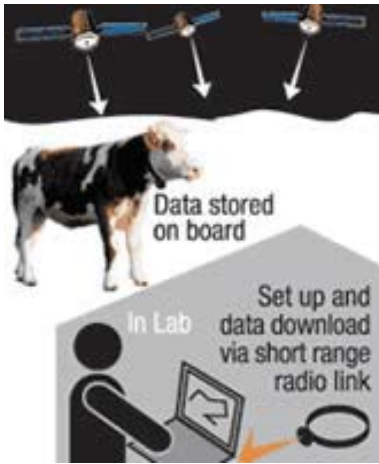


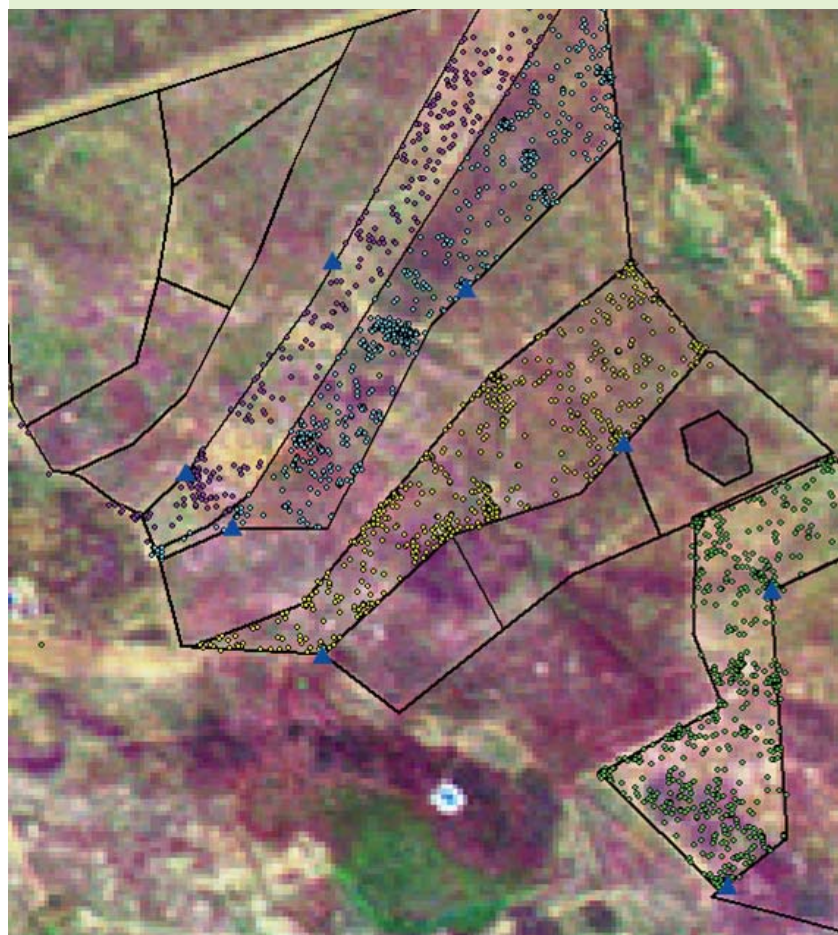
Collars

Precise and Accurate



- **AgTraX** collars have been developed specifically for the agricultural research scientist.
- Highly accurate and incredibly precise, they offer the agricultural biologist unprecedented flexibility in meeting their research goals.
- A range in sizes are available and all use AA batteries that can be readily purchased anywhere in the world.
- **AgTraX** collars have already been successfully deployed in numerous agricultural research projects including sheep, cattle, horses and pigs in Australia, Europe and North America.
- Independent tests have been carried out on BlueSky Telemetry™ collars by a variety of clients.
- The probability of obtaining a location is significantly higher in virtually every environment tested compared with competitor's products. For example in a North American boreal forest landscape, BlueSky Telemetry™ collars obtained a location on more than 90% of location attempts and sometimes 100% over many weeks with a setting of one location every hour. The nearest rival collars never bettered 80% and were often as low at 60%.
- BlueSky Telemetry™ collars are extremely accurate. Depending on the settings, the accuracy of GPS collars can be <3m and the 95% quantile <10m.

	Latitude	Longitude
Mean Accuracy	1.3m - 1.5m	2.1m - 2.4m
Precision (95% quantile)	6m	8m
Range	0.3m - 21m	0.5m - 23m





Large AgTraX Collar specifications

Dimensions of Housing (W, L, H)	Including L6 Power Pack 95mm x 51mm x 30mm Including L12 Power Pack 95mm x 51mm x 54mm Including L18 Power Pack 95mm x 51mm x 63mm
Mass (excluding harness) Smallest harness starts at 180g	With L6 lithium power pack: 470g With L12 lithium power pack: 590g With L18 lithium power pack: 720g
Power Packs	L6 power pack: 6 AA 1.5V batteries L12 power pack: 12 AA 1.5V batteries L18 power pack: 18 AA 1.5V batteries
Recommended Battery	Energizer Lithium e2, Duracell Ultra or Rechargeable
Setup & Data Download	Using embedded UHF radio modem Separately scheduled to be on when required Setup and download over distances up to 50m
Tracking Beacon	10 separate frequencies available Separately scheduled to be on when required Tracking ability over 6000m
Battery life and memory capacity	1MB Flash Memory that can store up to 65,000 positional locations or 4000 RINEX data locations. The number of locations that can be collected is independent on battery capacity which in itself is dependent on the tracking schedule selected, the configuration of the satellites and their visibility to the collar. In the best case scenario, the GPS receiver determines a location within 4 seconds although the average time taken to obtain a location is 30s. Best and worst case scenarios presented.

Values are for lithium batteries

	L6 Power Pack	L12 Power Pack	L18 Power Pack
144 fixes / day	2,600-12,500 locations over 18-87 days	6,900-34,100 locations over 48-232 days	7,800-37,500 locations over 54-261 days
24 fixes / day	2,100-5,700 locations over 87-238 days	5,500-15,200 locations over 232-635 days	6,300-17,100 locations over 261-714 days
6 fixes / day	1,200-1900 locations over 203-322 days	3,200-5,200 locations over 541-860 days	3,600-5,800 locations over 609-967 days

Schedule Options	1. Simple: One location/second through to one location/day 2. Complex: Same as above but with diurnal and seasonal variation possible 3. Real: Locations obtained at pre-programmed real times
Data Form	Date, Time, Latitude, Longitude (WGSActivation Collar 84), Nos satellites, Accuracy
RINEX	RINEX output for differential correction
Activation	Collar setup and data download using BlueSky Telemetry™ DataTraX™ software
Operating Temp	-40°C to + 54°C Depends on batteries used
Data Retention Range	-40°C to 60°C
Suitability	Any terrestrial animal > 20Kg available Temperature body mass
Additional options available	Temperature, mortality, head up and head down activity sensors and RINEX data suitable for post processing differential correction (purchase of GRINGO software required for differential correction)



BlueSky Telemetry™ Ltd
PO Box 7500
Aberfeldy PH15 2YG Scotland
Telephone: +44 (0) 1887 820816 Fax: +44 (0) 1887 820844
E-mail: i.hulbert@blueskytelemetry.com

www.blueskytelemetry.com